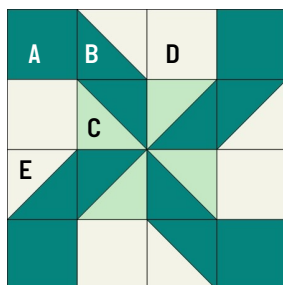




Saturday Sampler-Block 17

Clay's Choice

Block finishes 6" square (6½ unfinished)



This is another traditional block made simply from half-square triangles and squares.

What you need:

Fabric 1 (aqua) four 2" squares (A) and four 2¾" squares (B)

Fabric 2 (light green): two 2¾" squares (C)

Fabric 3 (background) : four 2" squares (D) and two 2¾" squares (E)

1. Draw a diagonal line on the back of the four (B) squares (Fig. 1). Pair two B squares with the two C squares and two B squares with the two E squares right sides together. Sew ¼" seams on both sides of the drawn lines (fig. 2). Cut apart on the drawn line and press toward Fabric 1. You will have four Fabric 1/Fabric 2 HSTs and four Fabric 1/Fabric 3 HSTs (fig. 3).



Fig. 1



Fig. 2



Fig. 3

2. Use the Fabric 1/Fabric 2 HSTs and piece the center square as shown in fig. 4. Press the seams open. Make sure the HSTs form a pinwheel. The center should measure 3½" square.

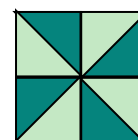


Fig. 4

3. Use the Fabric 1/Fabric 3 HSTs and piece the units as shown in fig. 5. Make 4. Press seams open.



Fig. 5

4. Use units from Steps 1-3 and the 2" squares of Fabrics 1 to piece the block as shown in figures 5-7.

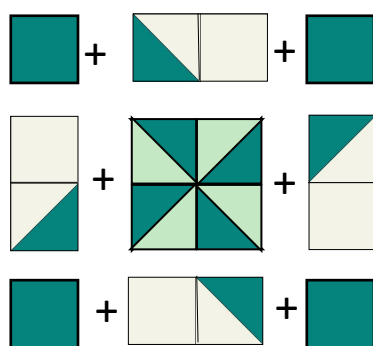


Fig. 5

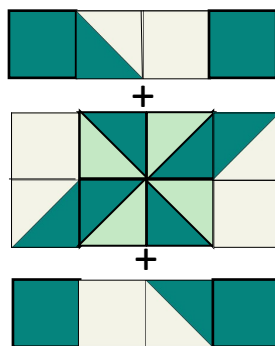


Fig. 6

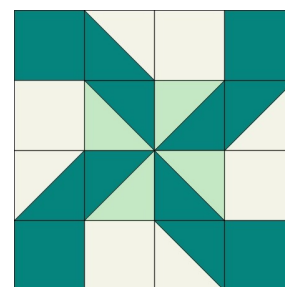
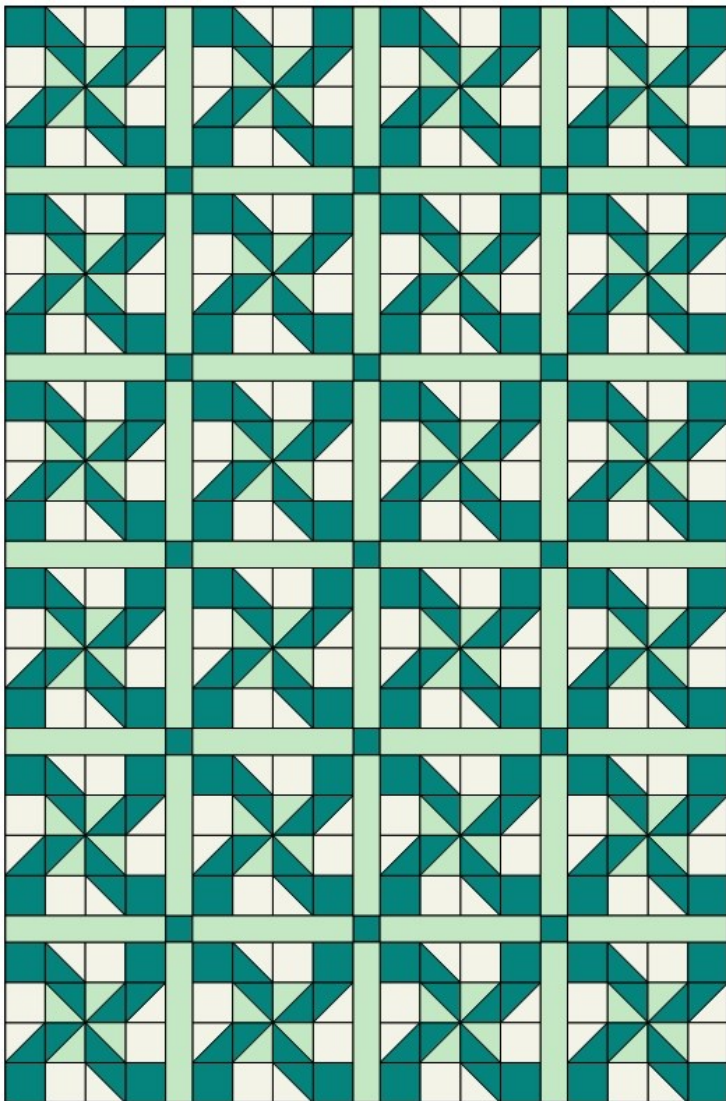


Fig. 7



Here is a mockup of the blocks set with sashing. It is not very exciting in only three fabrics, but look at the movement in this quilt. I definitely think it has possibilities if you make it scrappy.

And here is a mockup of the Clay's Choice block alternating with the Tulip block from week 7. I love how the Clay's Choice blocks give the illusion of curved frames. I want to drop everything and make this just so I can see how it looks with real fabric!!

