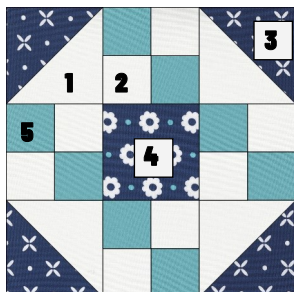




Saturday Sampler-Block 12

True Blue Variation

Block finishes 6" square (6½" unfinished)



What you need:

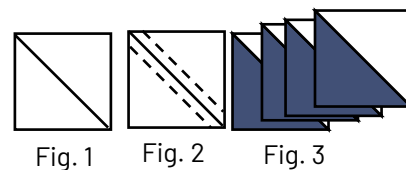
Fabric 1 (white): two 2⅞" squares (piece 1), and eight 1½" squares (piece 2)

Fabric 2 (dark blue): two 2⅞" squares (piece 3) and one 2½" square (piece 4)

Fabric 3 (light blue): eight 1½" squares (piece 5)

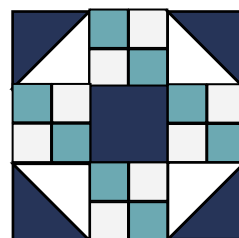
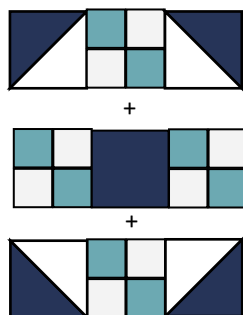
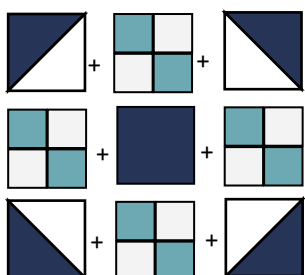
Sew it together:

Make the half-square triangles (HST). Draw a diagonal line on the back of the 2⅞" Fabric 1 squares (fig. 1). Layer one RST with a 2⅞" fabric 2 square and sew a ¼" seam on both sides of the drawn line (fig. 2). Cut on the drawn line and press toward fabric 2. Yield: 4 HST (Fig. 3).



Using the 1½" squares of Fabrics 1 and 3, make (4) four-patch units (Fig. 4)

Piece block together following diagrams below. Block should measure 6½" square at this point.



I always like to show how the block looks in a quilt so here are a couple of options for the True Blue block!

This is another one that would be better scrappy—and with sashing as shown in the layout on the right.

