

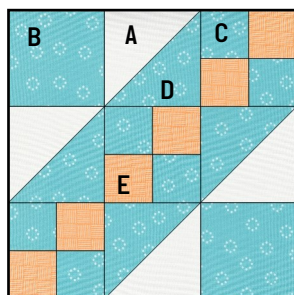


Saturday Sampler-Block 6

Road to the White House

Block finishes 6" square (6½ unfinished)

Even though I dislike writing anything even remotely political, the name of this traditional block is "Road to the White House" and I like the block. This is a great one for using scraps and stash—just mix up any fabrics in the block, but keep the "E" squares the same fabric to create a chain that will pull it all together.



What you need:

Fabric 1 (background): two $2\frac{7}{8}$ " squares (A)

Fabric 2 (blue): two $2\frac{1}{2}$ " squares (B), six $1\frac{1}{2}$ " squares (C), and two and one $2\frac{7}{8}$ " squares (D)

Fabric 3 (pink): six $1\frac{1}{2}$ " squares (E)

1. Make the half-square triangles (HST). Draw a diagonal line on the back of the two $2\frac{7}{8}$ " background squares (fig. 1). Layer each RST with a $2\frac{7}{8}$ " fabric 2 square and sew a $\frac{1}{4}$ " seam on both sides of the drawn line (fig. 2). Cut on the drawn line and press toward fabric 2 (Fig. 3). Yield: 4 HST.
2. Make four-patch units. Sew $1\frac{1}{2}$ " squares of fabric 2 and fabric 3 together in pairs (fig. 4). Sew pairs together as shown in fig. 5 to make four-patch. Make 3.
3. Arrange B squares and units from Steps 1 and 2 as shown (fig. 6). Sew into rows. Sew rows together to make the block (fig.7).

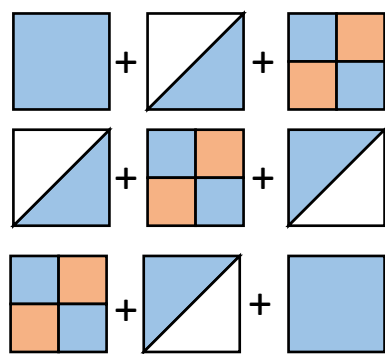
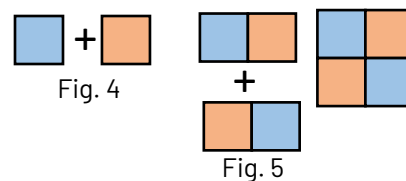
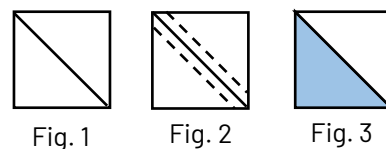


Fig. 6

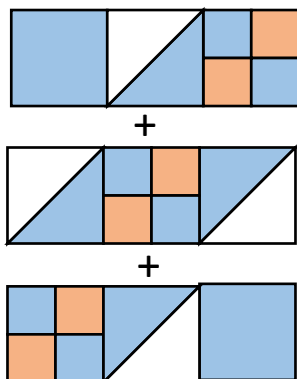
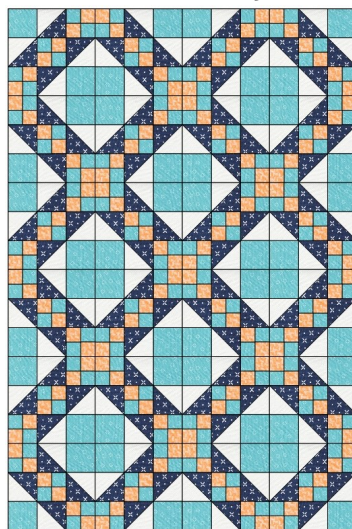
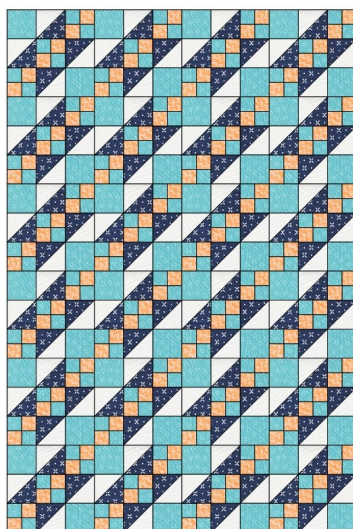
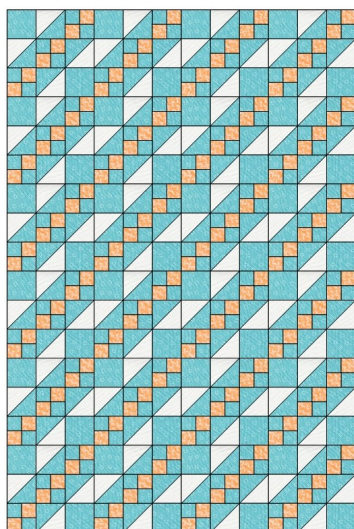


Fig. 7



Here are some quilt ideas using this block. As you can see in the center image, it is more interesting to use a different fabric for the corner squares. The design on the right rotates alternating blocks 90 degrees. This block is great with scrappy four-patches.